



ROYAL LEPAGE



TRILAND REALTY
REAL ESTATE BROKERAGE



SOLD

Market Charts

April 2012

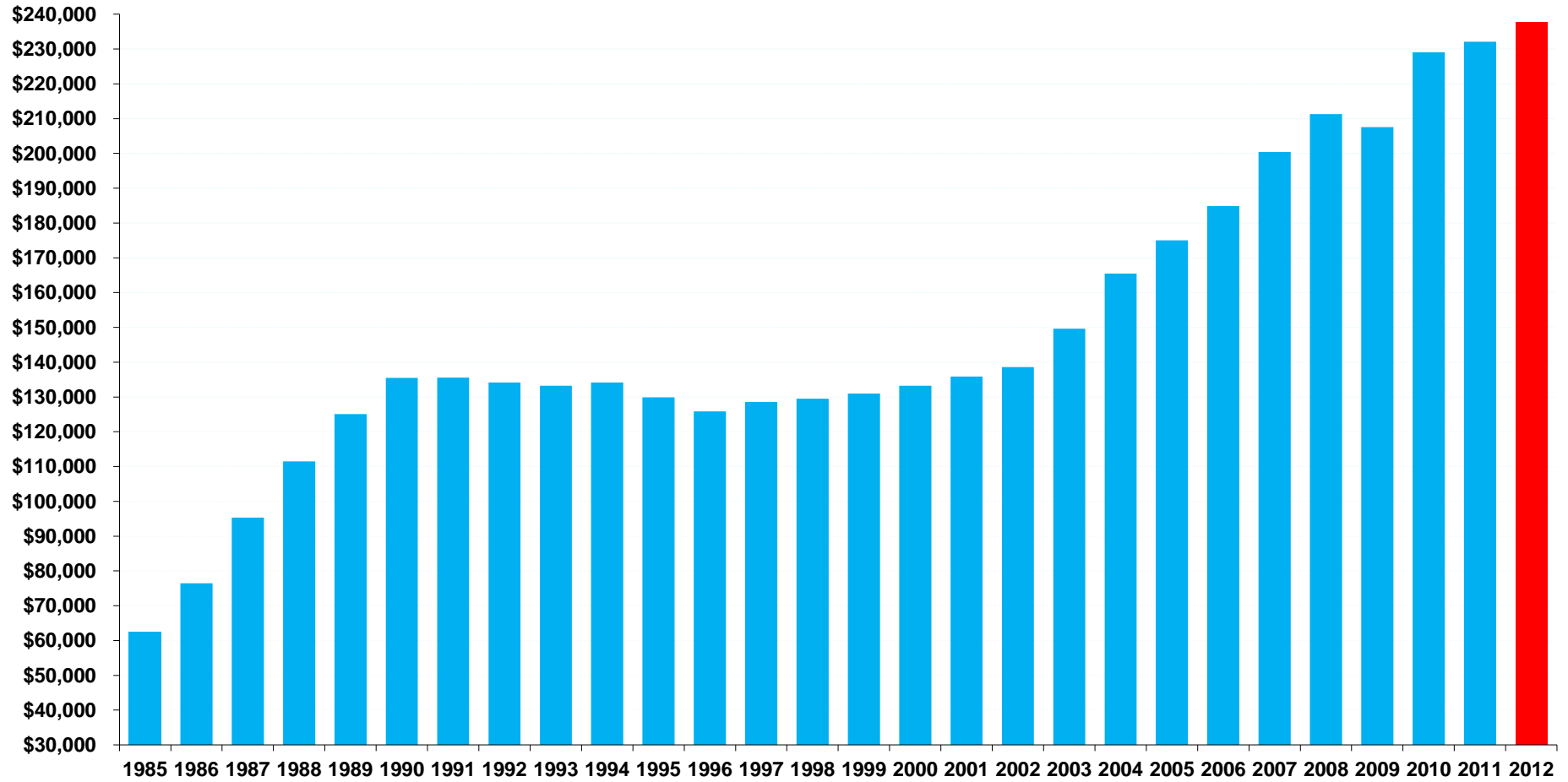
Ends per Agent



Remax City Centre	1829	106	17	\$232,849
Royal LePage Triland	2801	193	15	\$243,030
Royal LePage Landco	524	36	15	\$197,928
Remax Advantage	655	48	14	\$234,365
Oliver & Associates	636	51	12	\$230,700
Sutton Group Select	1541	125	12	\$262,495
C21 First Canadian	1683	139	12	\$218,927
Sutton Group Preferred	1611	149	11	\$229,266
Royal LePage 1st London	507	51	10	\$209,589
Agent Realty	376	38	10	\$235,405
Executive Elite	989	114	9	\$211,991
Keller Williams Lifestyles	230	35	7	\$245,681

Average Residential Price

(Detached and Condos)



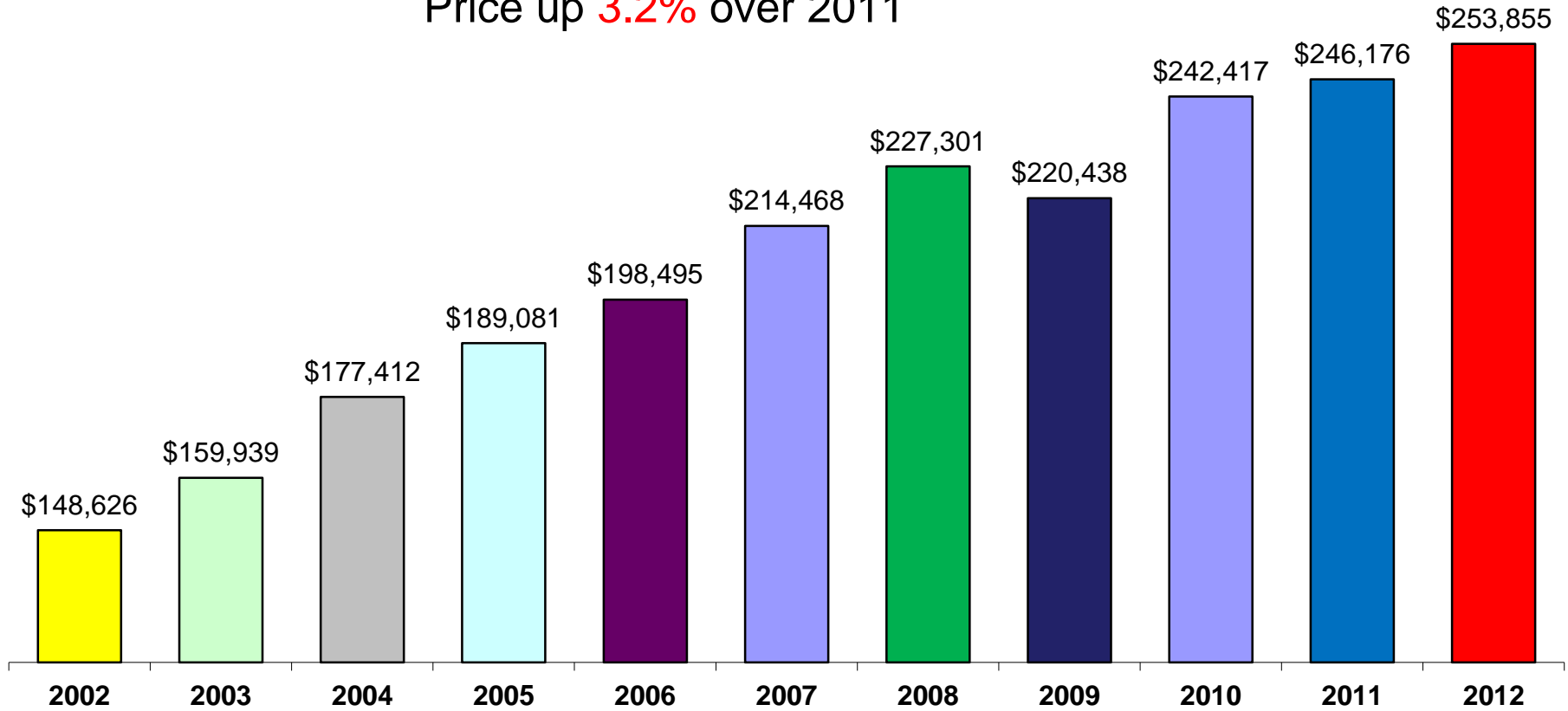
MLS Sales – London & St. Thomas Association of Realtors' Jurisdiction – YTD April 30

Average Residential Price

(Excluding Condos)



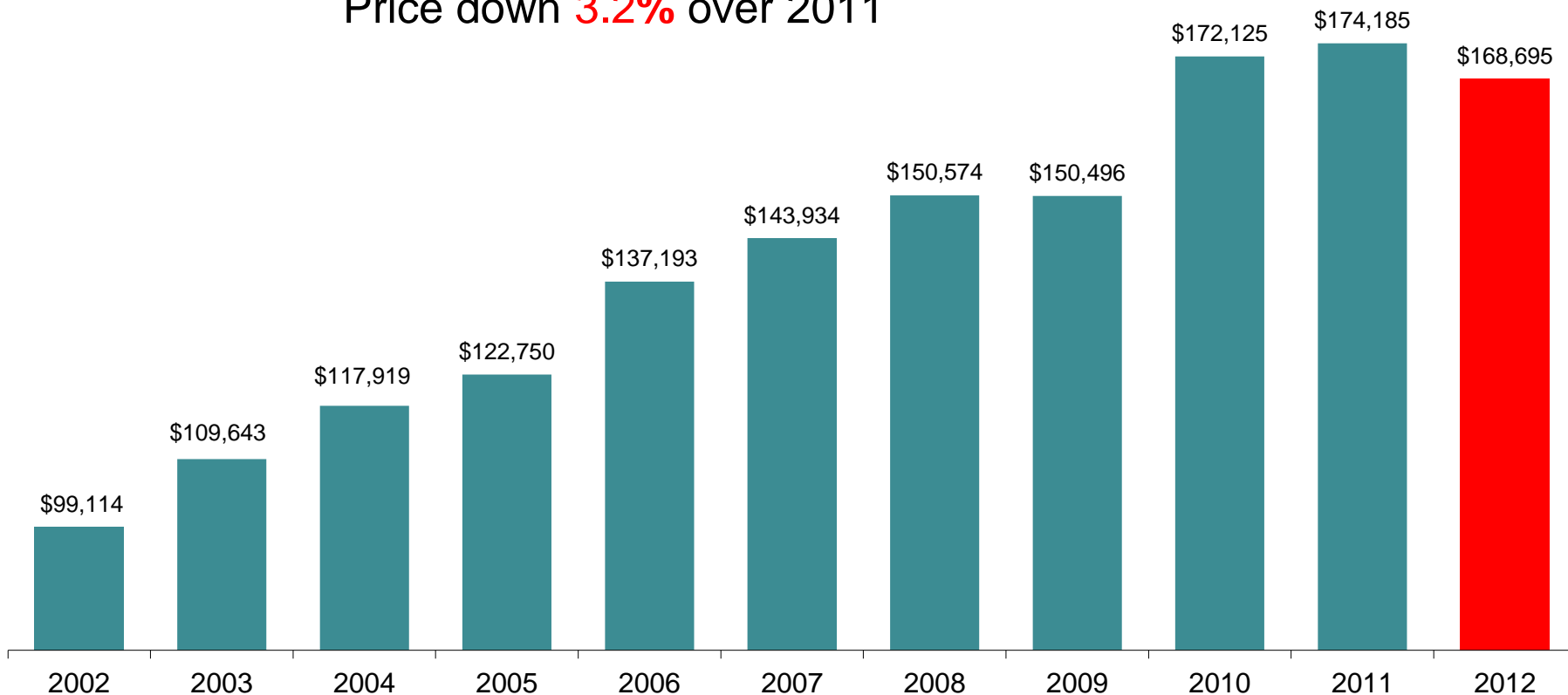
Price up **3.2%** over 2011



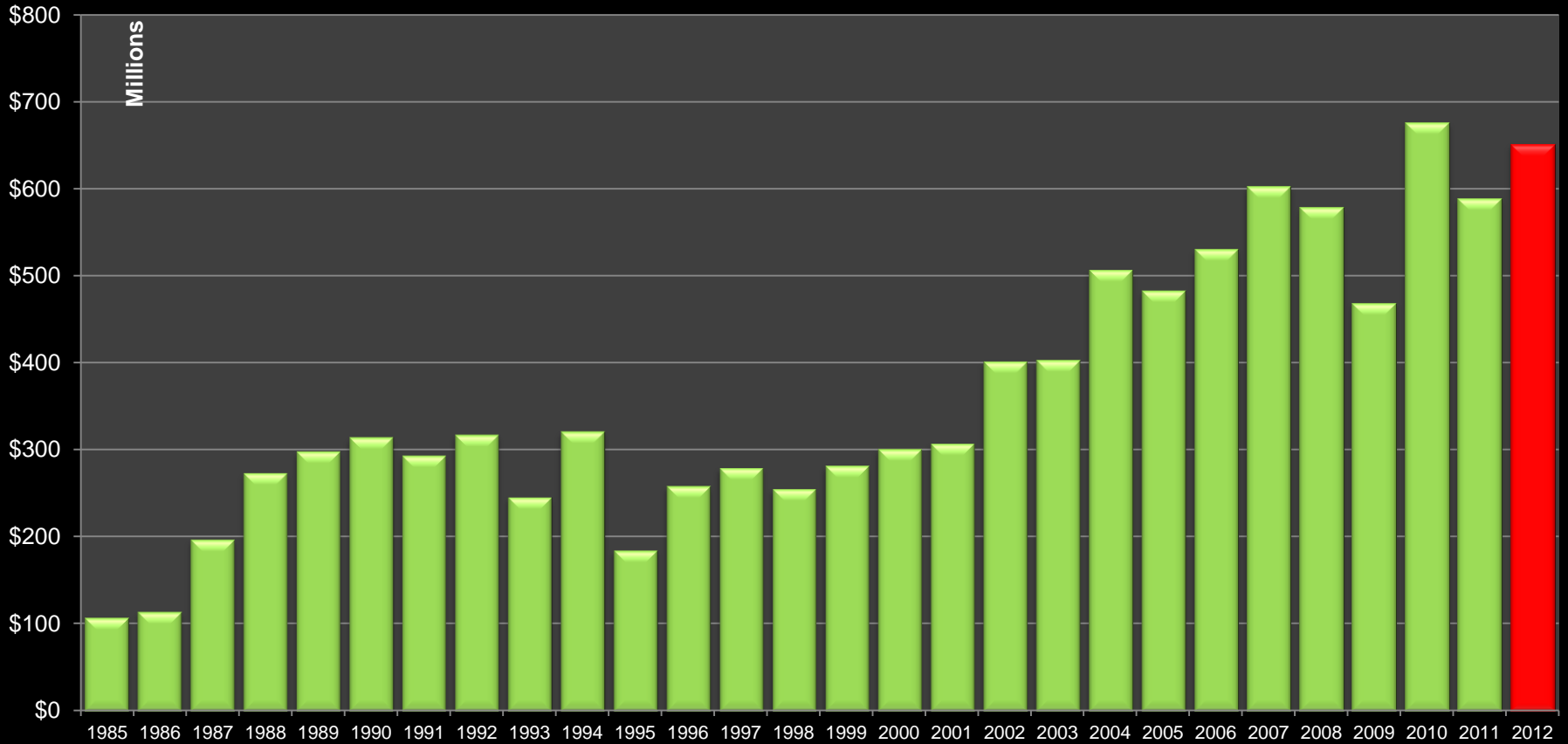
Average Condominium Price



Price down **3.2%** over 2011

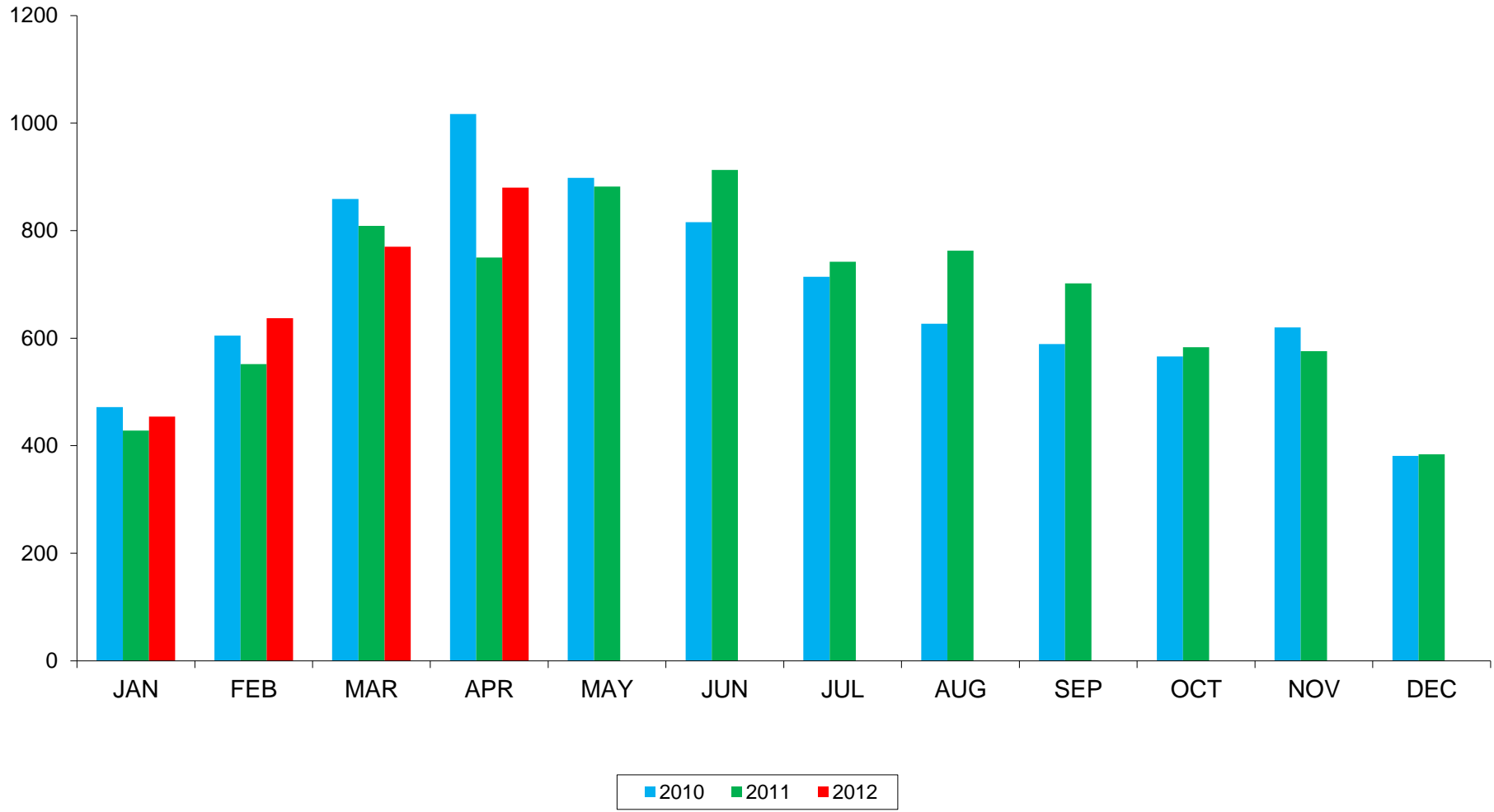


Dollar Volume of Residential Sales



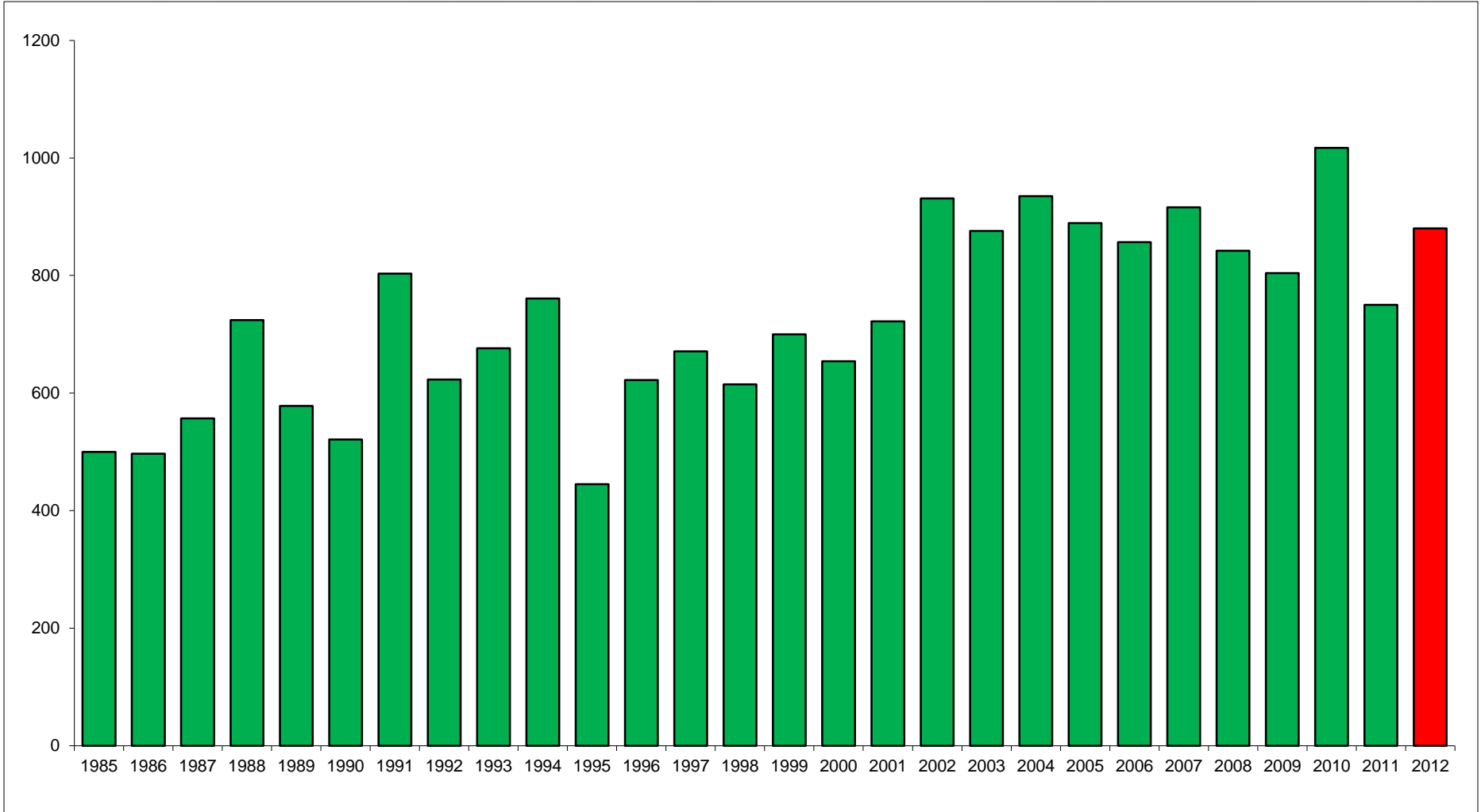
MLS Sales – London & St. Thomas Association of Realtors' Jurisdiction – YTD April 30

Number of Residential Sales

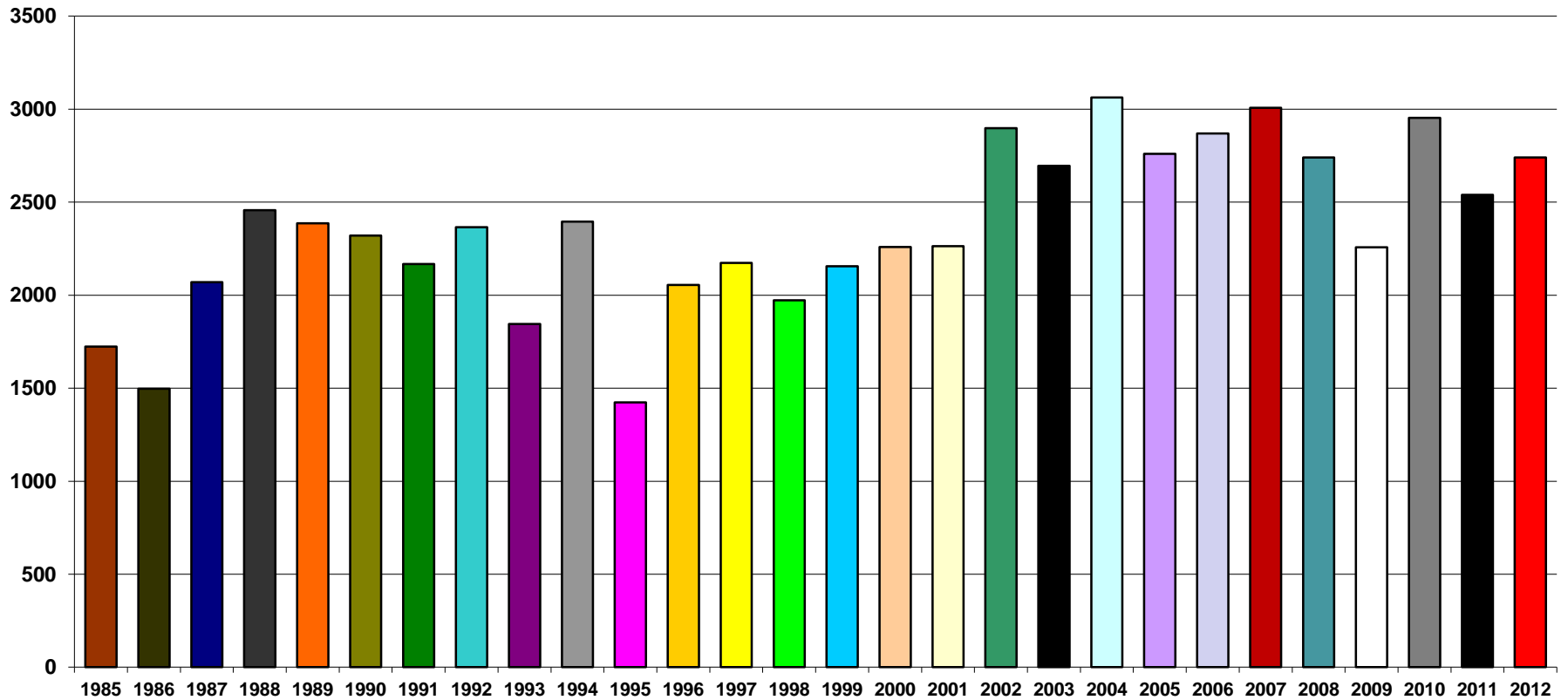


MLS Sales - London & St. Thomas Association of Realtors' Jurisdiction

Number of Residential Sales in April

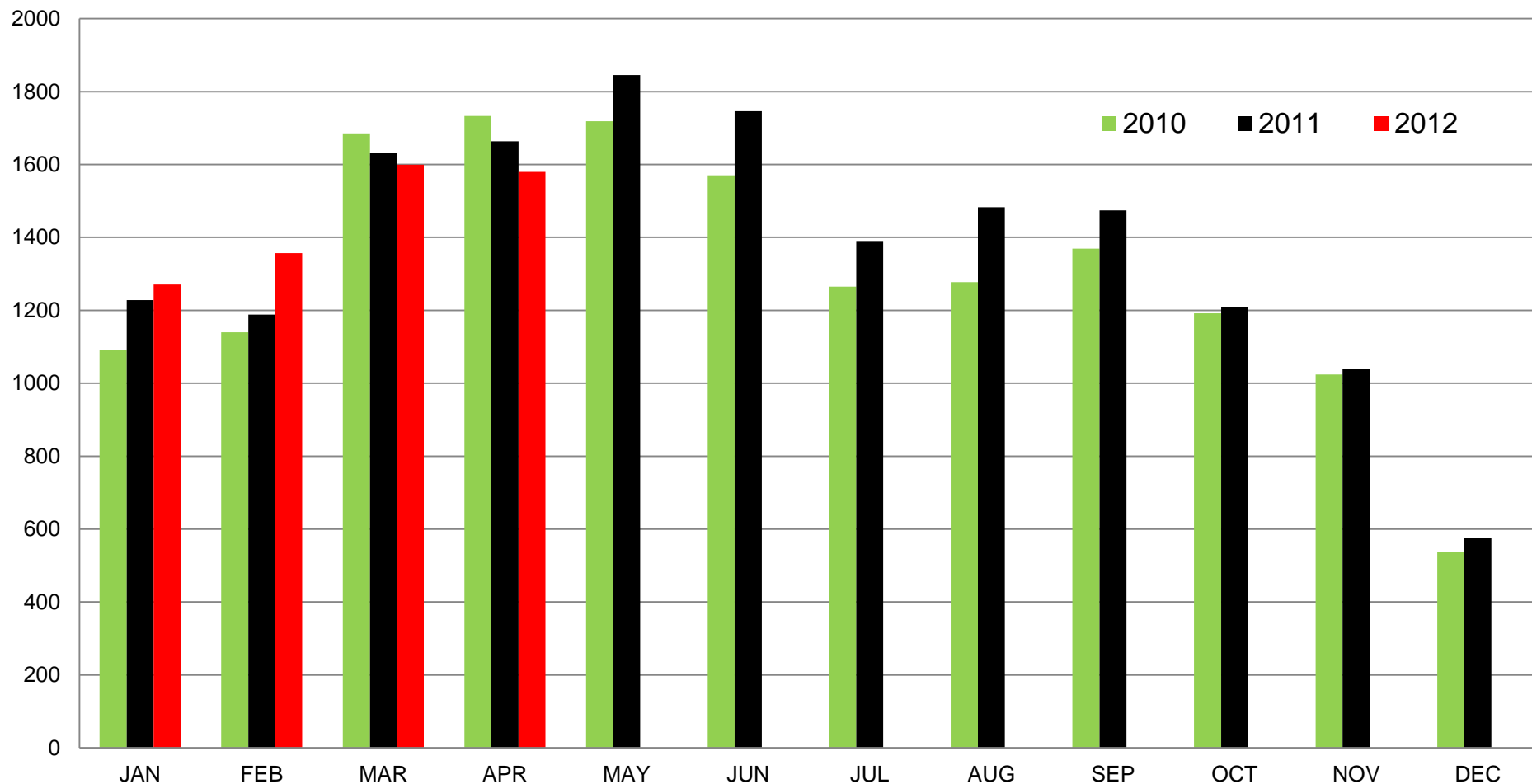


MLS Sales - London & St. Thomas Association of Realtors' Jurisdiction



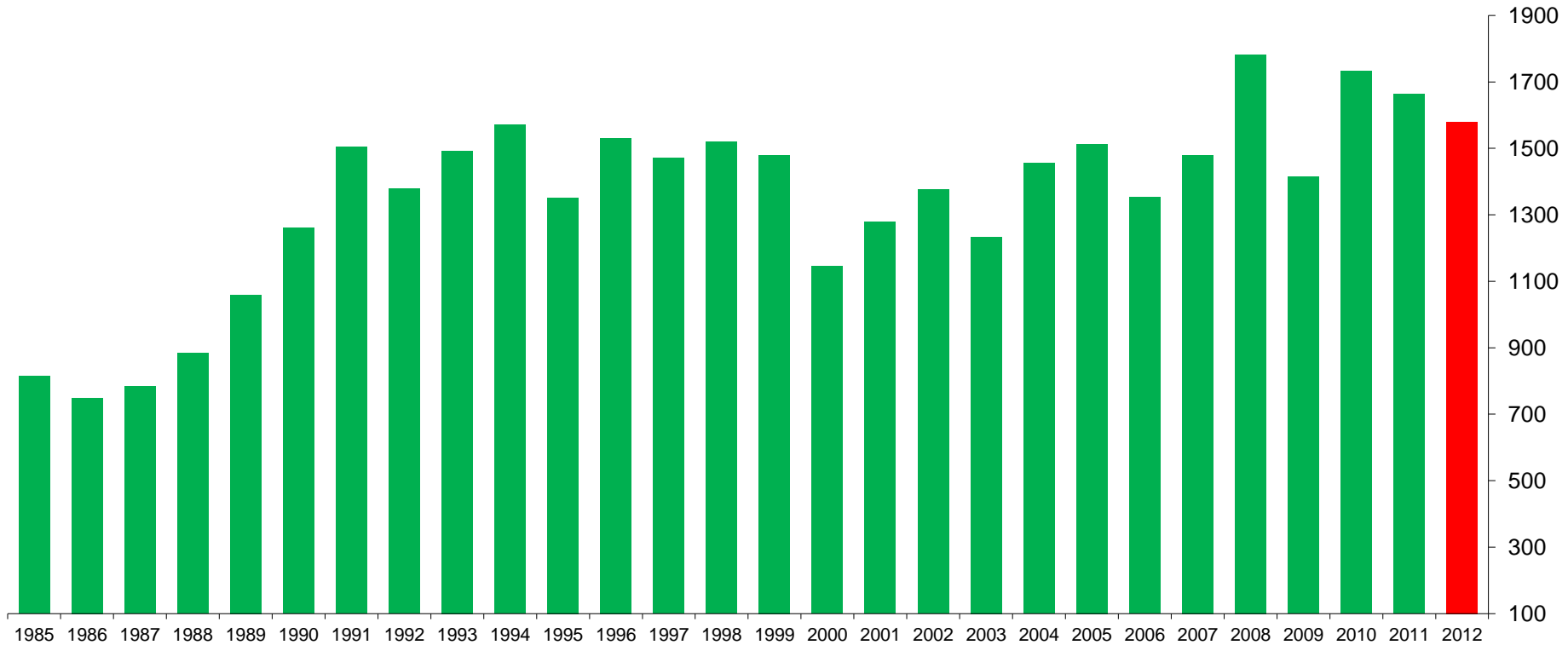
MLS Sales - London & St. Thomas Association of Realtors' Jurisdiction

New Residential Listings



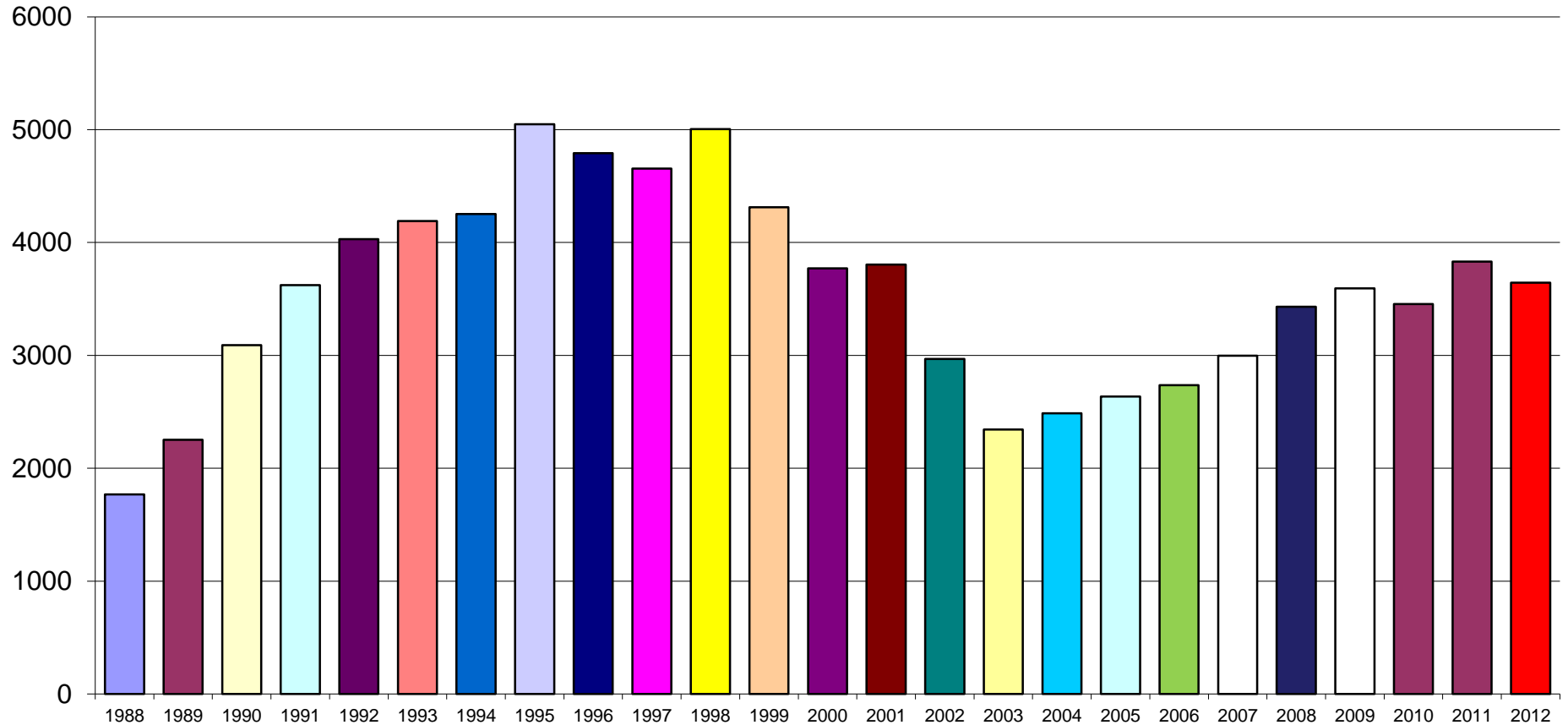
MLS Sales - London & St. Thomas Association of Realtors' Jurisdiction – at April 30

New Residential Listings in April



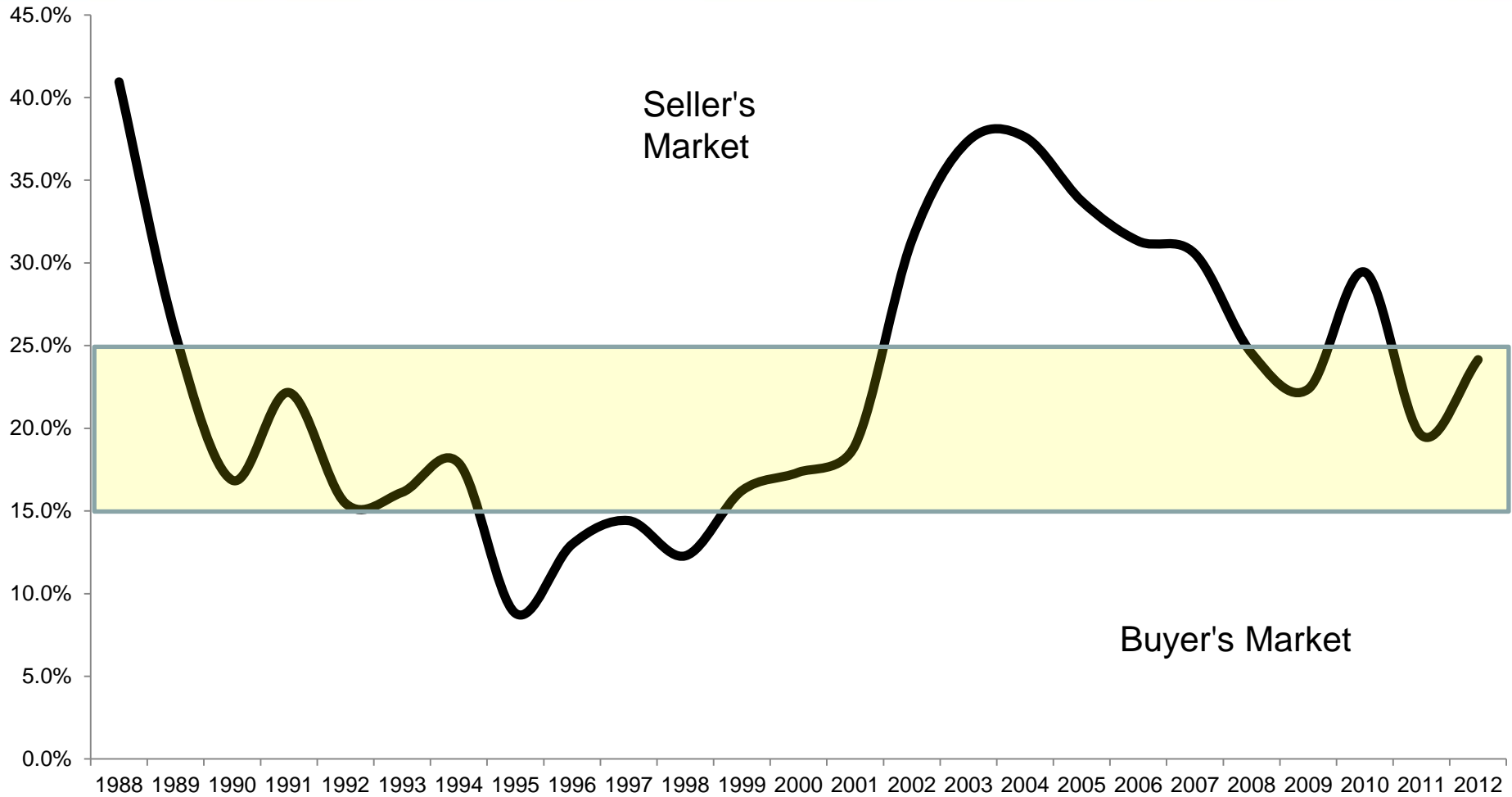
MLS Sales - London & St. Thomas Association of Realtors' Jurisdiction

Active Residential Listings

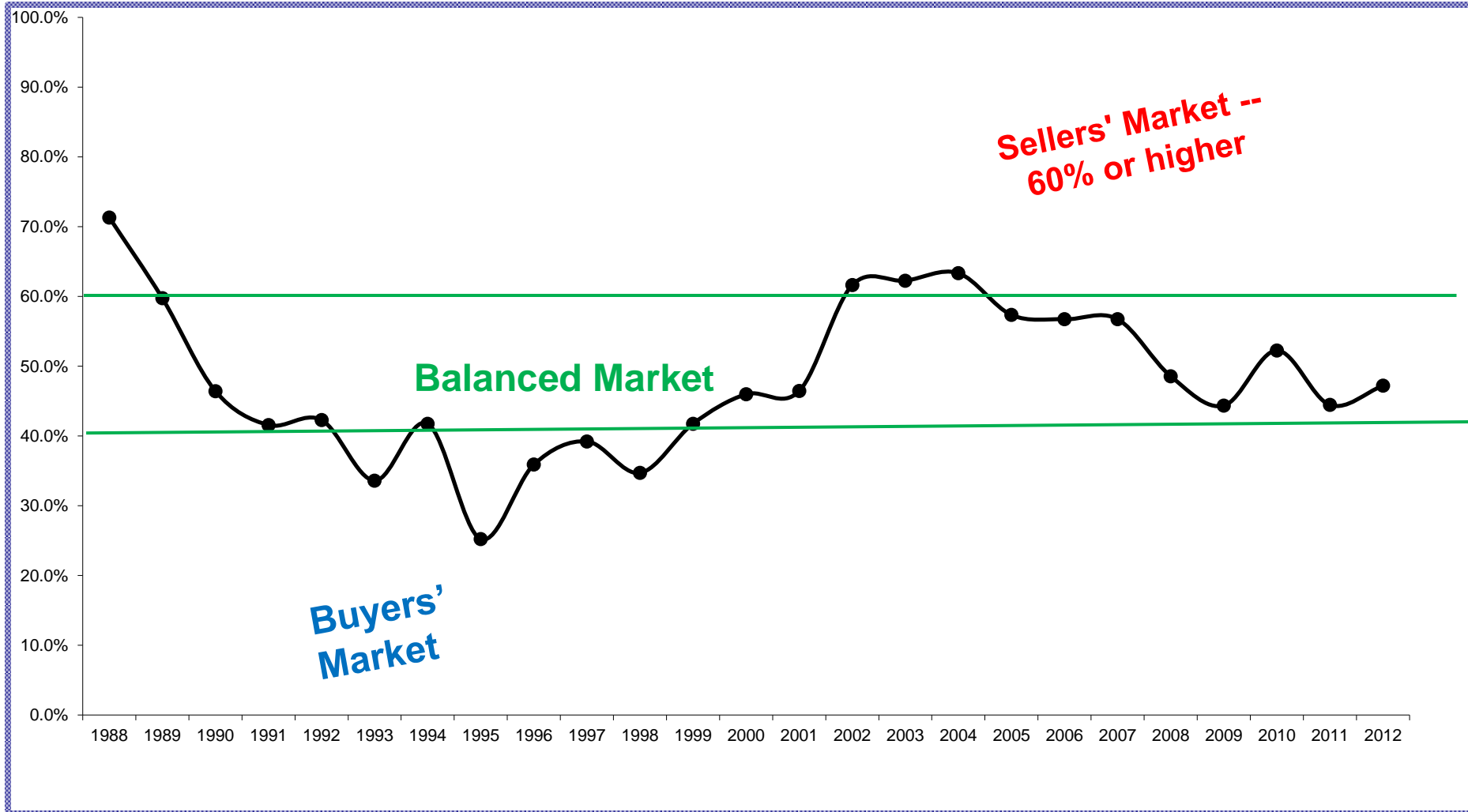


MLS Sales - London & St. Thomas Association of Realtors' Jurisdiction – at April 30

Sales to Active (Inventory) Listings Ratio



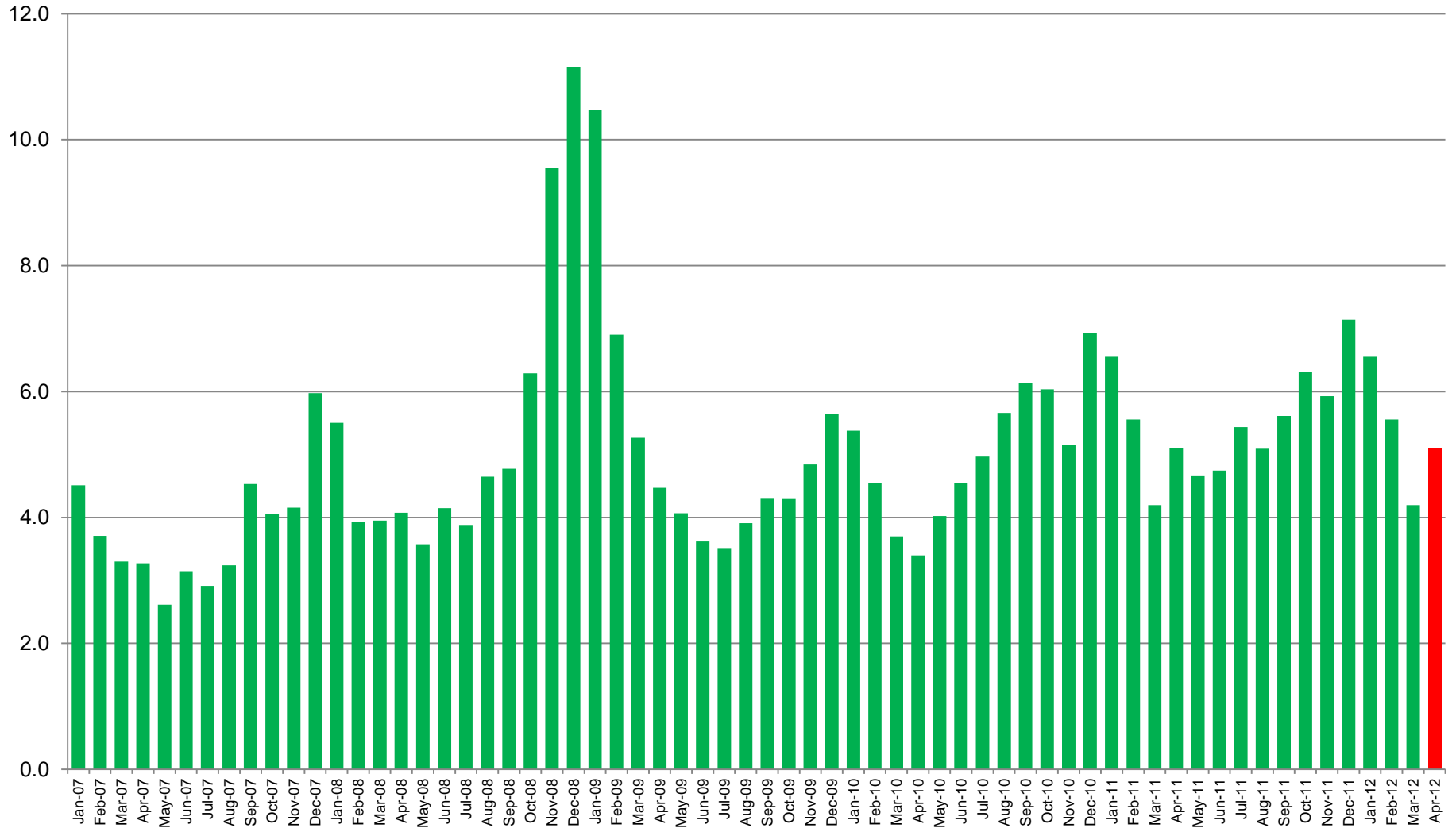
Sales to New Listings Ratio



MLS Sales Greater London Area – London & St. Thomas Association of Realtors' Jurisdiction – YTD April 30

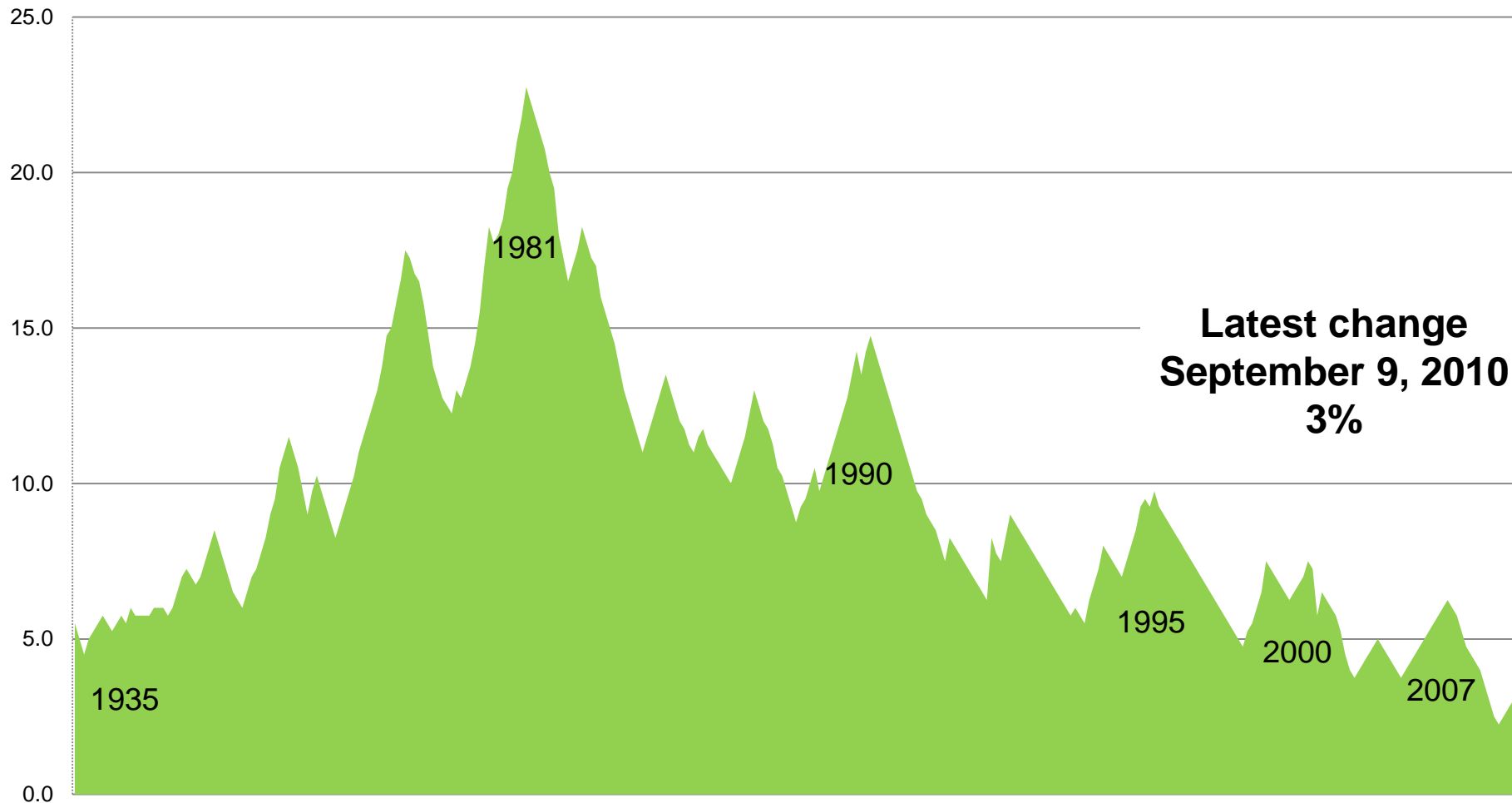
Months Inventory of Residential Listings

London & St. Thomas Association of Realtors' Jurisdiction

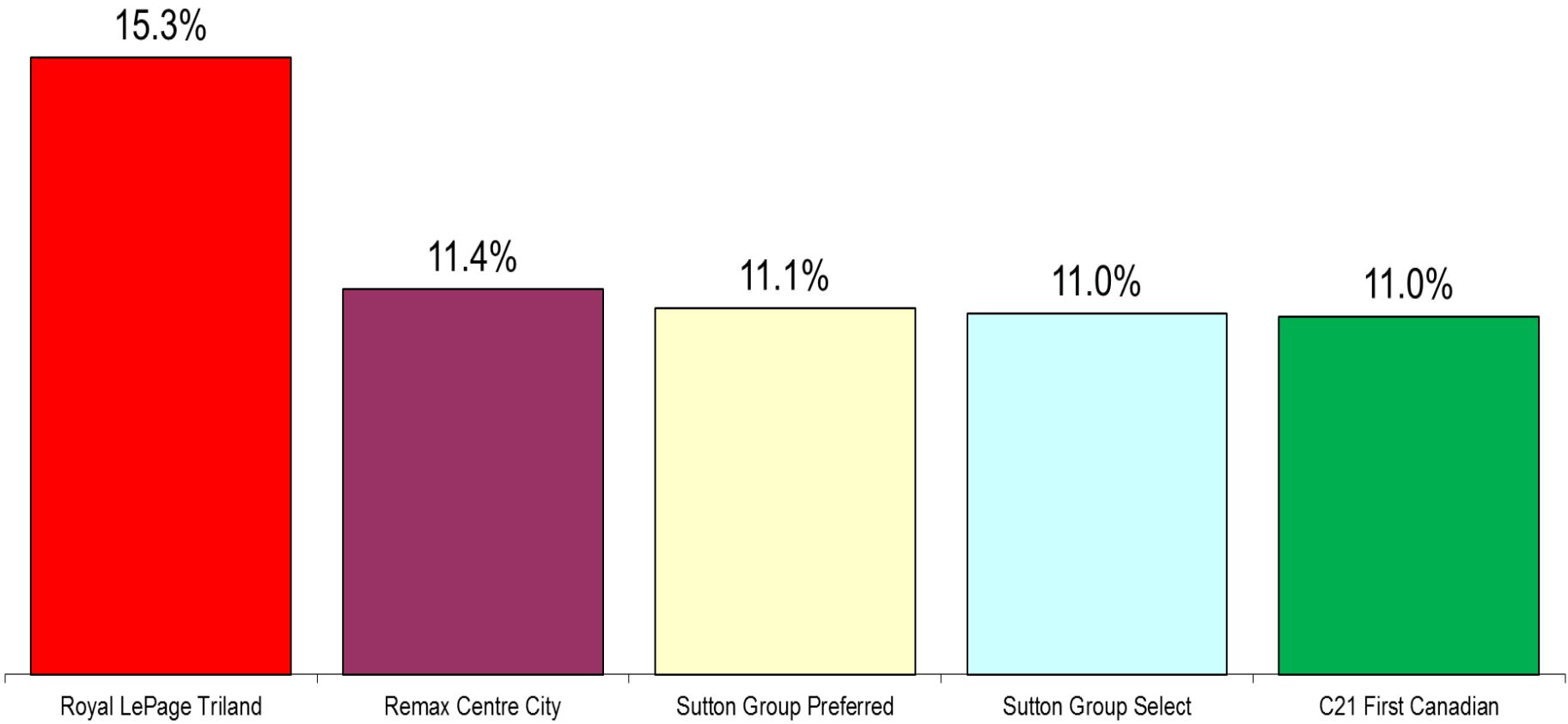




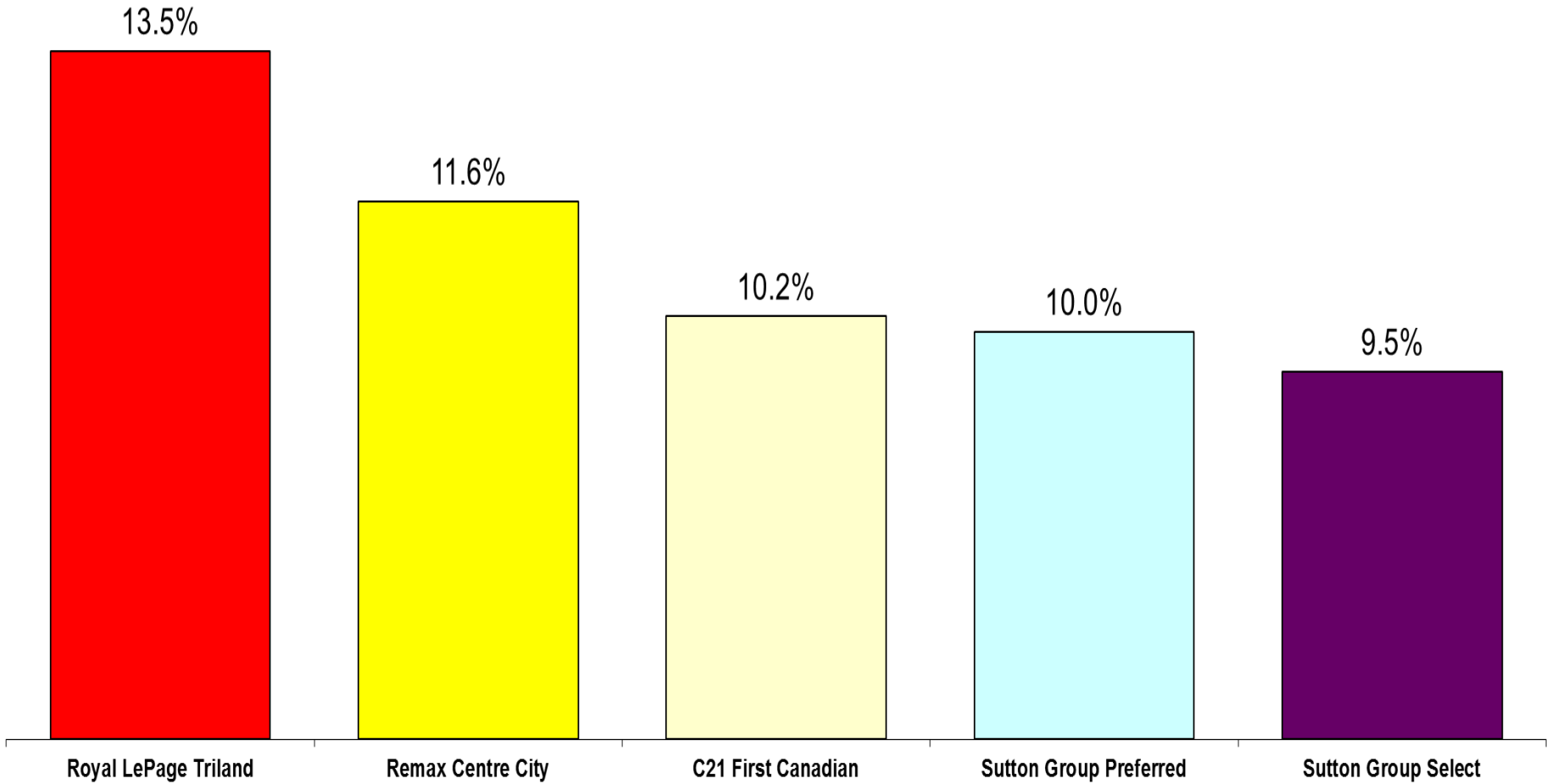
Royal Bank of Canada Prime Interest Rate



Dollar Volume Market Share

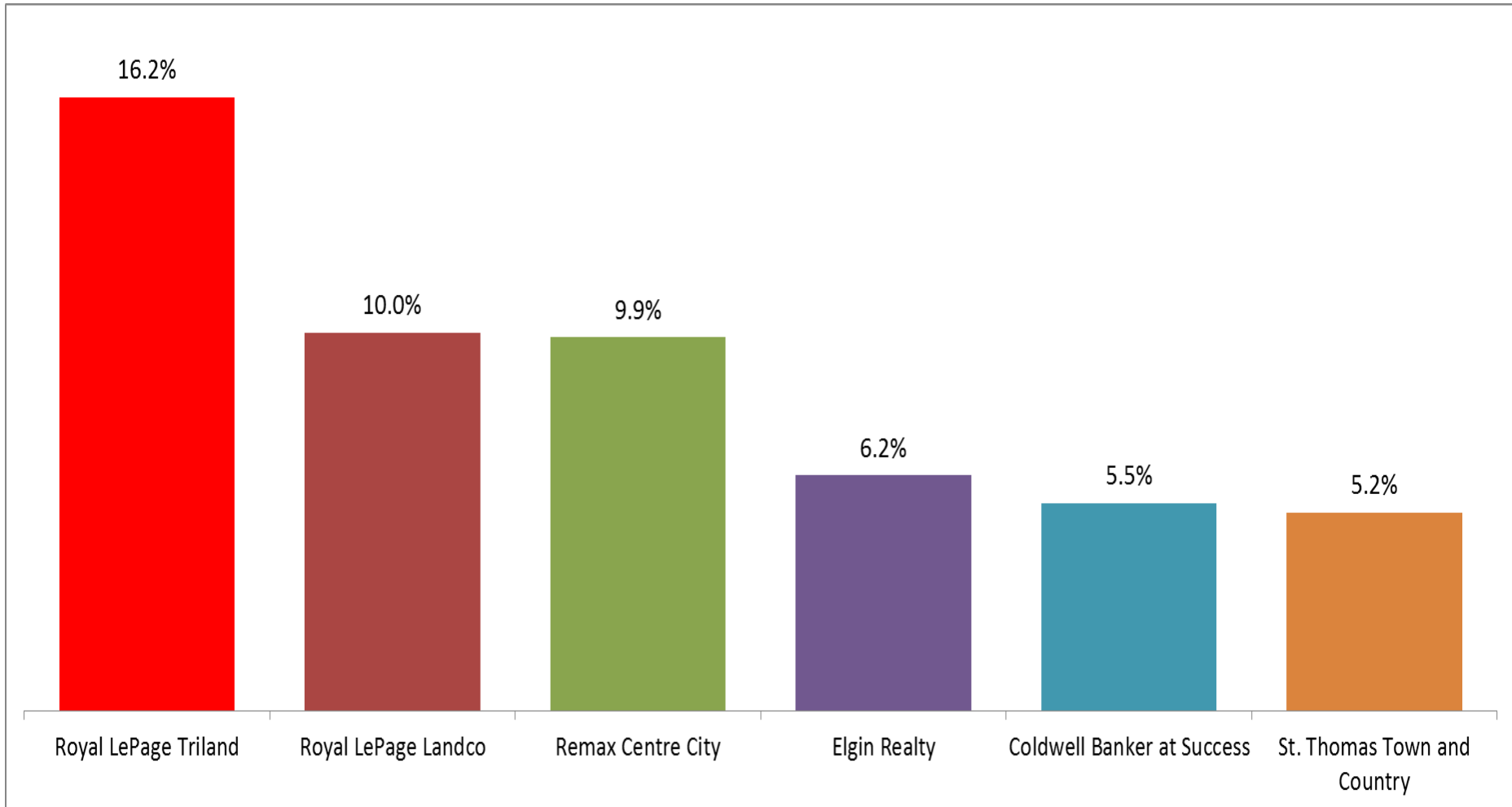


Transaction can mean either purchase or a sale. Where both buyer and seller are represented, two transactions are counted.
MLS Residential sales, London and St. Thomas Association of Realtors (LSTAR) – City of London YTD April 30, 2012





Market Share of Residential Listings St. Thomas and Elgin County

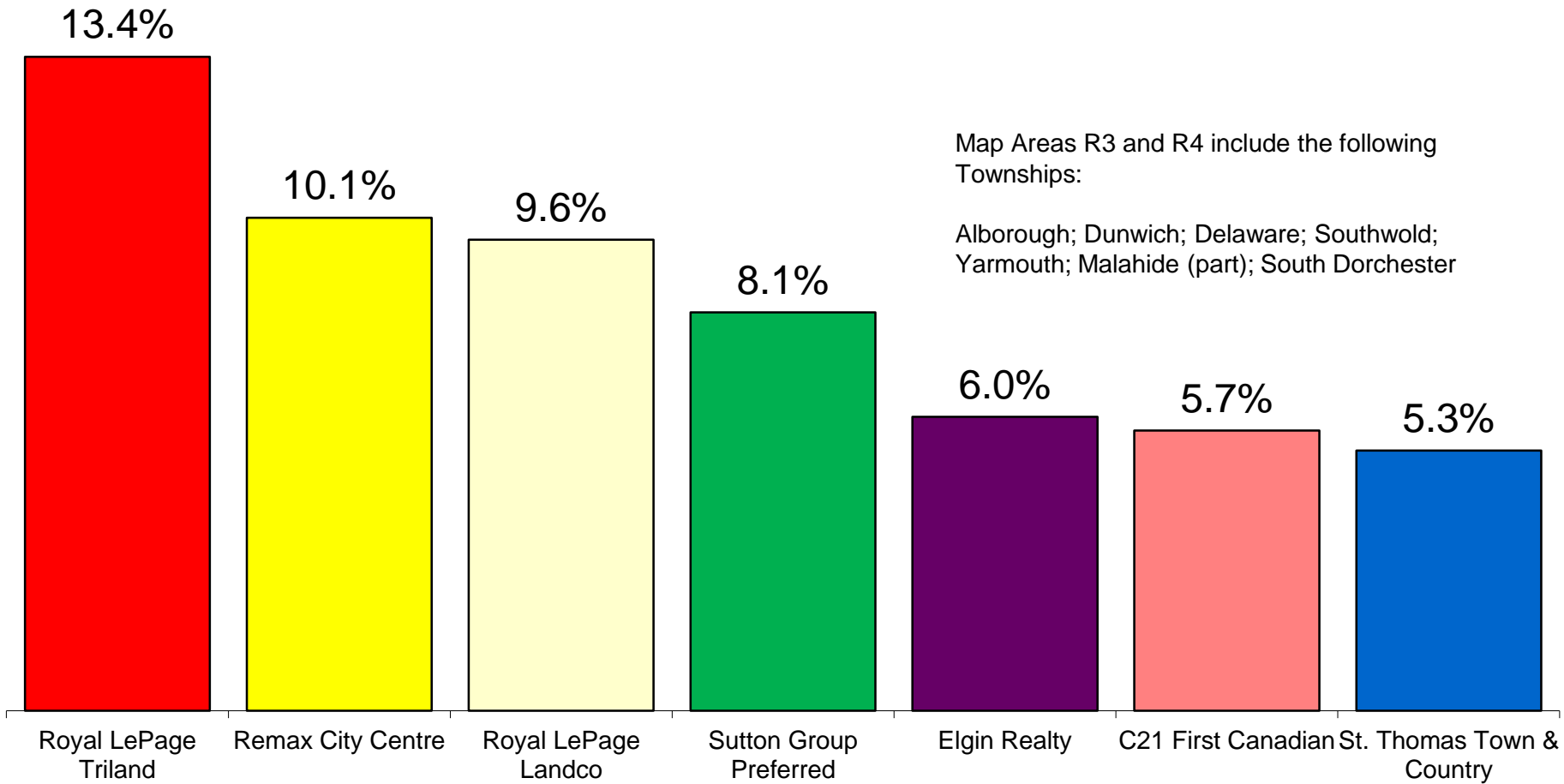


MLS Sales – London & St. Thomas Association of Realtors' Jurisdiction – YTD April 30



St. Thomas and “Map Areas R3 and R4”

Dollar Volume of Residential Sales – Market Share
YTD April 30, 2012



Map Areas R3 and R4 include the following Townships:

Alborough; Dunwich; Delaware; Southwold; Yarmouth; Malahide (part); South Dorchester

Compiled from data supplied by London & St. Thomas Association of Realtors